

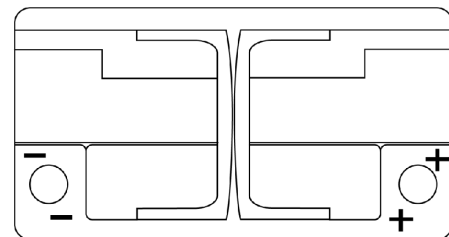
Product overview

Batteries for Cars

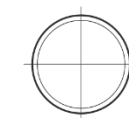
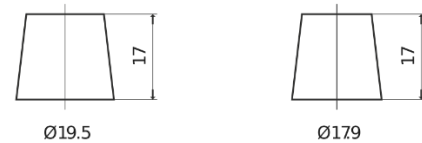
AGM DK820



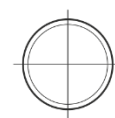
Polarity



Terminal Type



Positive Terminal



Negative Terminal

Hold Down



Part number	DK820
Technology	AGM
EAN/GTIN	3661024027137
Voltage	12 V
Capacity	82 Ah
CCA	800 A
Length	315 mm
Width	175 mm
Height	190 mm
Box size	L04
Polarity	ETN 0
Terminal Type	EN taper post
Hold Down	B13
Weights (subject of variation)	23.30 kg

Design, features and specifications are subject to change without notice. We disclaim any representation or warranty, express or implied, concerning the data or recommendations, and in no event shall be liable for any loss or damage claimed to have arisen as a result. Some products may not be available in your local market.